

DR 0.3

EQUIP. TYPE *R390A/JRR EXP. NO.*

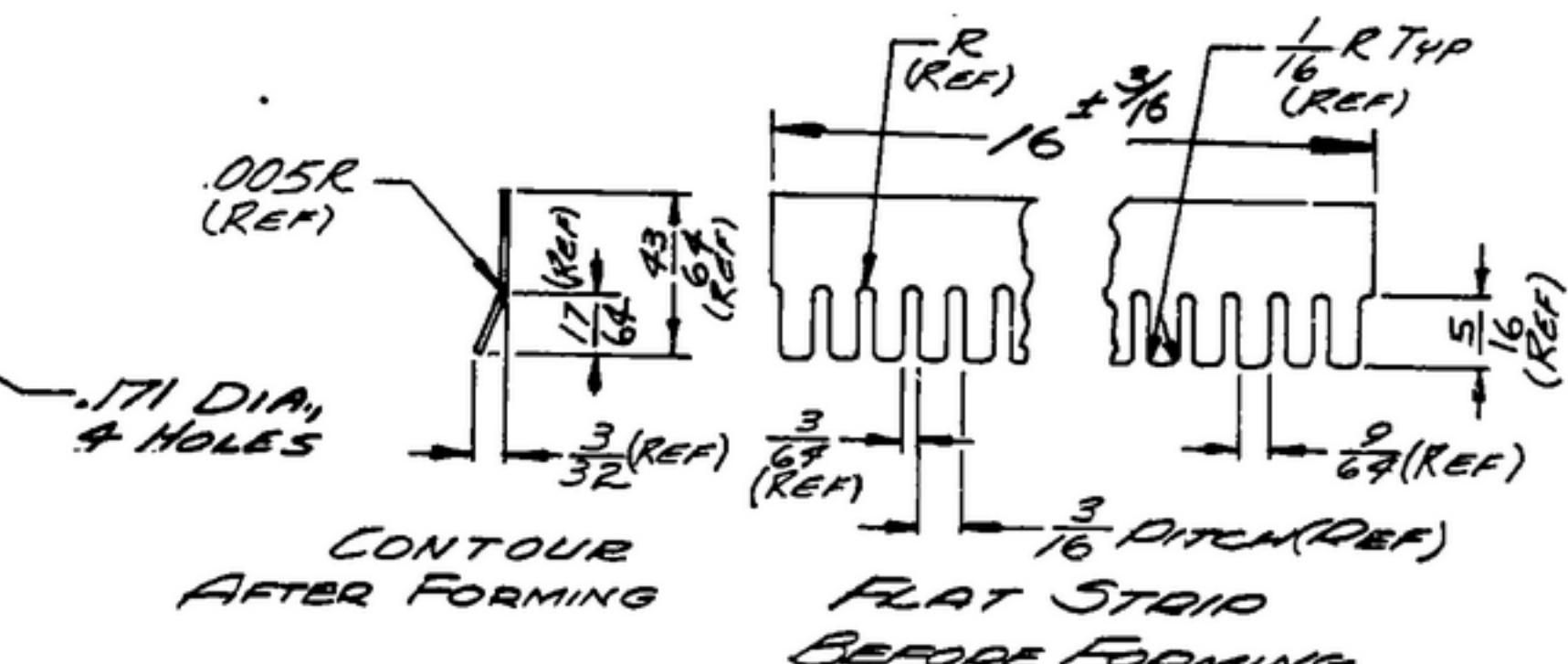
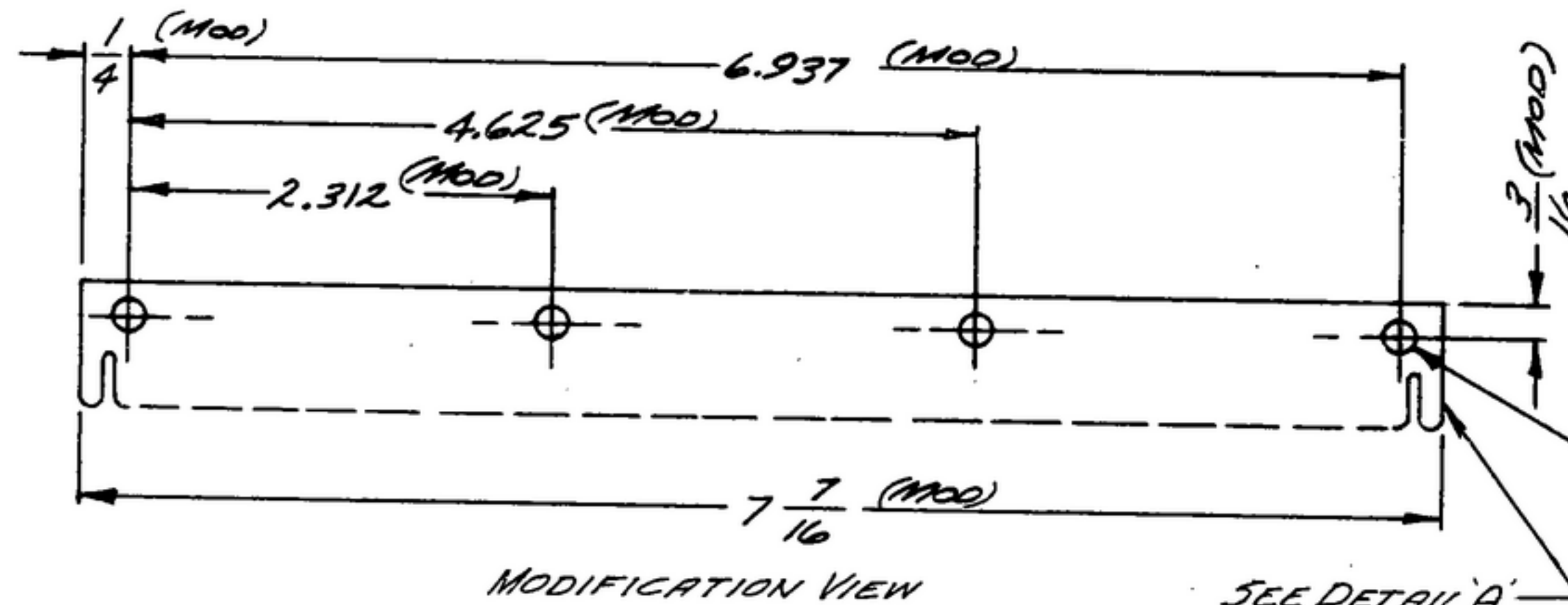
Col. 541 3265 002

NOTICE: WHEN GOVERNMENT DRAWINGS, SPECIFICATIONS, OR OTHER DATA ARE USED FOR ANY PURPOSE OTHER THAN IN CONNECTION WITH A DEFINITELY RELATED GOVERNMENT PROCUREMENT OPERATION, THE UNITED STATES GOVERNMENT THEREBY ASSUMES NO RESPONSIBILITY FOR ANY OBLIGATION WHATSOEVER AND THE FACT THAT THE GOVERNMENT MAY HAVE FORMULATED, PROVIDED, OR IN ANY WAY SUPPLIED THE SAID DRAWINGS, SPECIFICATIONS, OR OTHER DATA IS NOT TO BE REGARDED BY IMPLICATION OR OTHERWISE AS IN ANY MANNER LICENSES THE HOLDER OR ANY OTHER PERSON OR CORPORATION, OR CONFERS ANY RIGHTS OR PERMISSION TO MANUFACTURE, USE, OR SELL ANY PATENTED INVENTION THAT MAY IN ANY WAY BE RELATED THERETO.

THIS DOCUMENT HAS BEEN PURCHASED BY THE GOVERNMENT AND MAY BE REPRODUCED AND USED IN CONNECTION WITH ANY GOVERNMENT PROCUREMENT OR MAINTENANCE OPERATION.

*FOR INFORMATION ONLY. CONTRACTOR MAY AT HIS OPTION DEVIATE FROM THESE PROCESS DETAILS.

REVISIONS			
SYM	DESCRIPTION	DATE	APPROVAL



NOTES

- PART MAY BE NO. 97-123-1A AS SUPPLIED BY INSTRUMENT SPECIALTIES CO., INC., LITTLE FALLS, N.J., OR EQUAL, MODIFIED AS SHOWN & SHALL MEET THE FOLLOWING REQUIREMENTS & DIMENSIONS SHOWN.
- DETAIL A SHOWS PART AS SUPPLIED BY MANUFACTURER.

DESCRIPTION:

BERYLLIUM COPPER (2% BE). $\pm .0006$ THICK, PREFORMED.
FINISH: BRIGHT ALLOY PLATE PER ALBALLOY PROCESS BY HANSON-VAN WINKLE-MUNNING CO., MATAWAN, N.J., OR EQUAL.
* COLLINS 580 0001 00.

COLLINS PART NO.	ITEM	QTY	PART NO.	DESCRIPTION	DATE	DATE SPEC
------------------	------	-----	----------	-------------	------	-----------

LIST OF MATERIAL

COLLINS NO.	QTY	NEXT ASSY	USED ON
558-0492-004	1	SM-D-249140	SC-DL-248775
		SM-D-343619	

APPLICATION

DRAWN *RCHILL* CHECKED *Rh* APPROVED

UNLESS OTHERWISE SPECIFIED:
DECIMAL DIMENSIONS INCLUDING HOLE SIZES MAY VARY $\pm .005$
FRACTIONAL DIMENSIONS INCLUDING HOLE SIZES MAY VARY $\pm 1/64$
MACHINED ANGLES MAY VARY $\pm 1^\circ$
SHEARED ANGLES MAY VARY $\pm .25^\circ$
BROKEN ANGLES MAY VARY $\pm 1^\circ$
ECCENTRICITY BETWEEN ANY DIAMETERS ON THE SAME CENTERLINE SHALL NOT EXCEED .010 TOTAL INDICATOR READING.
ALL DIMENSIONS ARE FINISH DIMENSIONS INCLUDING APPLIED FINISH AND ARE GIVEN IN INCHES.

COLLINS-RADIO CO.
CEDAR RAPIDS, IOWA

14214PH-51-93

SIGNAL CORPS

REVIEWED *PME*

APPROVED *HLV*
PME

DATE *15 FEB 56* SCALE *1/1*

SPRING-GROUNDING

DEPARTMENT OF THE ARMY
SIGNAL CORPS ENGINEERING
LABORATORIES

FORT MONMOUTH NEW JERSEY

SM-B-249154